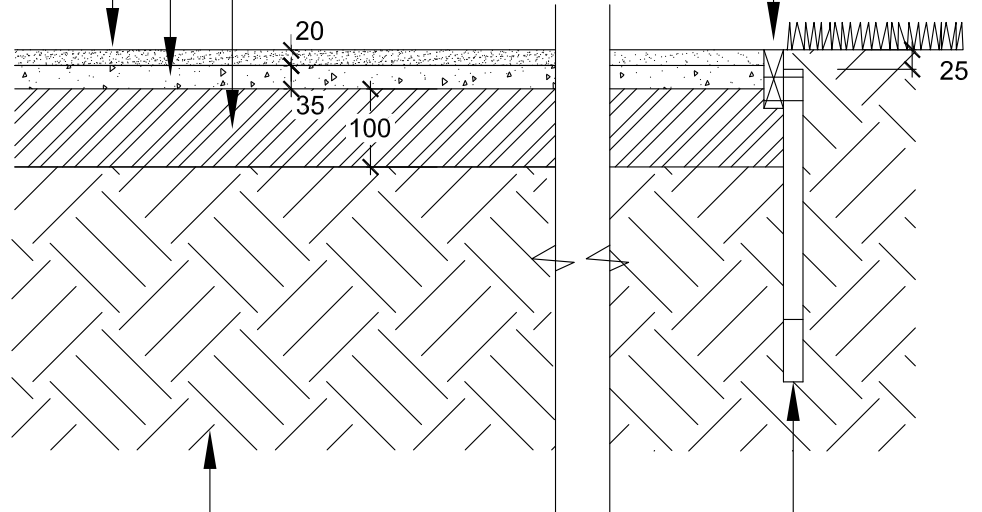


20mm COMPACTED DEPTH,  
TYPE L, 7mm NOM. SIZE HOT  
MIX ASPHALT PAVING

75x25mm CCA TREATED PINE  
PLINTH FIXED TO EACH STAKE  
WITH 2 NO. HOT DIPPED  
GALVANISED NAILS  
EDGE SHALL GENERALLY BE  
FLUSH WITH ADJACENT GRASS,  
GARDEN OR PATH AREAS

35mm COMPACTED DEPTH  
TYPE N 14mm NOM SIZE HOT  
MIX ASPHALT PAVING

LAYER BELOW ASPHALT -  
100mm COMPACTED DEPTH  
CLASS 3 RECYCLED CRUSHED  
ROCK WETMIX



SUB-BASE FULLY CONSOLIDATED  
WITH ALL SOFT SPOTS REMOVED  
AND REPLACED WITH 3% CLASS 2,  
20mm NSF CR

75x25x400mm LONG CCA  
TREATED PINE STAKES AT  
MAX. 1000mm CENTRES

NOTES:  
1. CROSS FALLS ON FOOTPATHS  
SHALL BE BETWEEN 2% AND 5%

**Yarra Standard: YSD405**  
Drawing Title:  
Paving (Open Space) - Asphalt (Pedestrian)

Scale at A4 1: 10

REV	DATE	DRAWN BY
A	06/09/02	
B	30/04/12	DKC
C	13/07/12	DKC
D	18/12/12	DKC
E	19/10/18	KA

