



CHARLES EVANS RESERVE: DRAFT LANDSCAPE CONCEPT  
FOR COMMUNITY CONSULTATION

## Community Consultation

Community consultation was undertaken in August / September 2023. This included two listening sessions in the park and a City of Yarra community survey that had 126 respondents. Of these, 81% of respondents lived in Cremorne, with a further 15% living in Richmond.

The survey identified the following features that the public valued most about Charles Evans Reserve. The draft concept has been designed to retain all of these features:

- Highly loved small space and part of the local community
- The playground is separated from roads
- It is a place to relax and unwind
- **It is an extension of people's homes**
- It is a place to meet and socialise, including street parties
- It is a peaceful, green space, an escape from the built environment
- The trees
- It is a place for dogs
- It is cool on a hot day



### DESIGN RESPONSE

1. Retain trees wherever practical
2. Create a garden space
3. Expand seating, picnic and BBQ facilities
4. Expand play space
5. Lawn for dog walkers
6. Beautify and reduce impact of sound wall
7. Separate dogs and children



The survey identified the following features that people would like to see the new design include:

- A new playground with some nature play elements
- A garden – emphasis on greenery and not built form
- Flexible outdoor spaces for singles, pairs, small and large groups including:
  - More picnic tables and chairs
  - A BBQ
  - A drinking fountain with dog bowl
- Separation between dog walkers and the playground
- Basketball half court / multi-sports / play options for older kids
- Lighting for nighttime use
- Better lawn



## CHARLES EVANS RESERVE: DRAFT LANDSCAPE CONCEPT COMMUNITY CONSULTATION FINDINGS



DOVER STREET ENTRANCE

SECTION THROUGH RESERVE

CUBITT STREET EXTENSION

# CHARLES EVANS RESERVE: DRAFT LANDSCAPE CONCEPT DESIGN CONCEPT: WHOLE RESERVE



GARDEN SETTING



EXAMPLE EQUIPMENT



EXAMPLE EQUIPMENT



BALANCING NATURE PLAY



FENCE



EXAMPLE EQUIPMENT



EXAMPLE EQUIPMENT



BASKET SWING



BASKET SWING

The play space design concept includes:

- An accessible, all ages basket swing
- A toddler slide
- A small play fort / combination play equipment
- Nature play balancing elements
- Separated play with informal fencing
- Connection to picnic area



# CHARLES EVANS RESERVE: DRAFT LANDSCAPE CONCEPT DESIGN PRECEDENTS: PLAY SPACE



BRICK PAVING



DOVER STREET MURAL



DOVER STREET MURAL  
(POSSIBLE CREMORNE  
GARDENS REFERENCE)



DOVER STREET MURAL



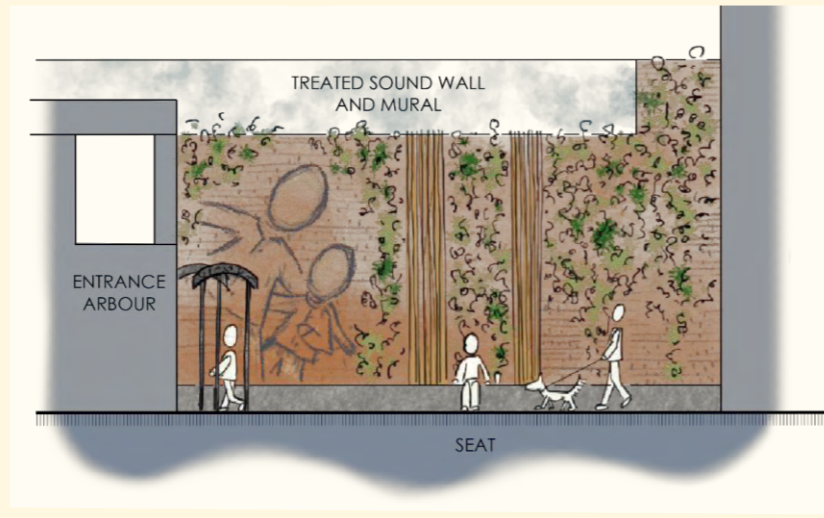
ENTRANCE ARBOR



ENTRANCE ARBOR



ENTRANCE WALKWAY



- The design concept includes:
- Clearer, safer entrance paths
  - Decorative entrance arbours
  - Seating at Dover Street
  - Beautification / visual softening of sound wall through planting and painting
  - Mural at Dover Street entrance



BEAUTIFY SOUND WALL

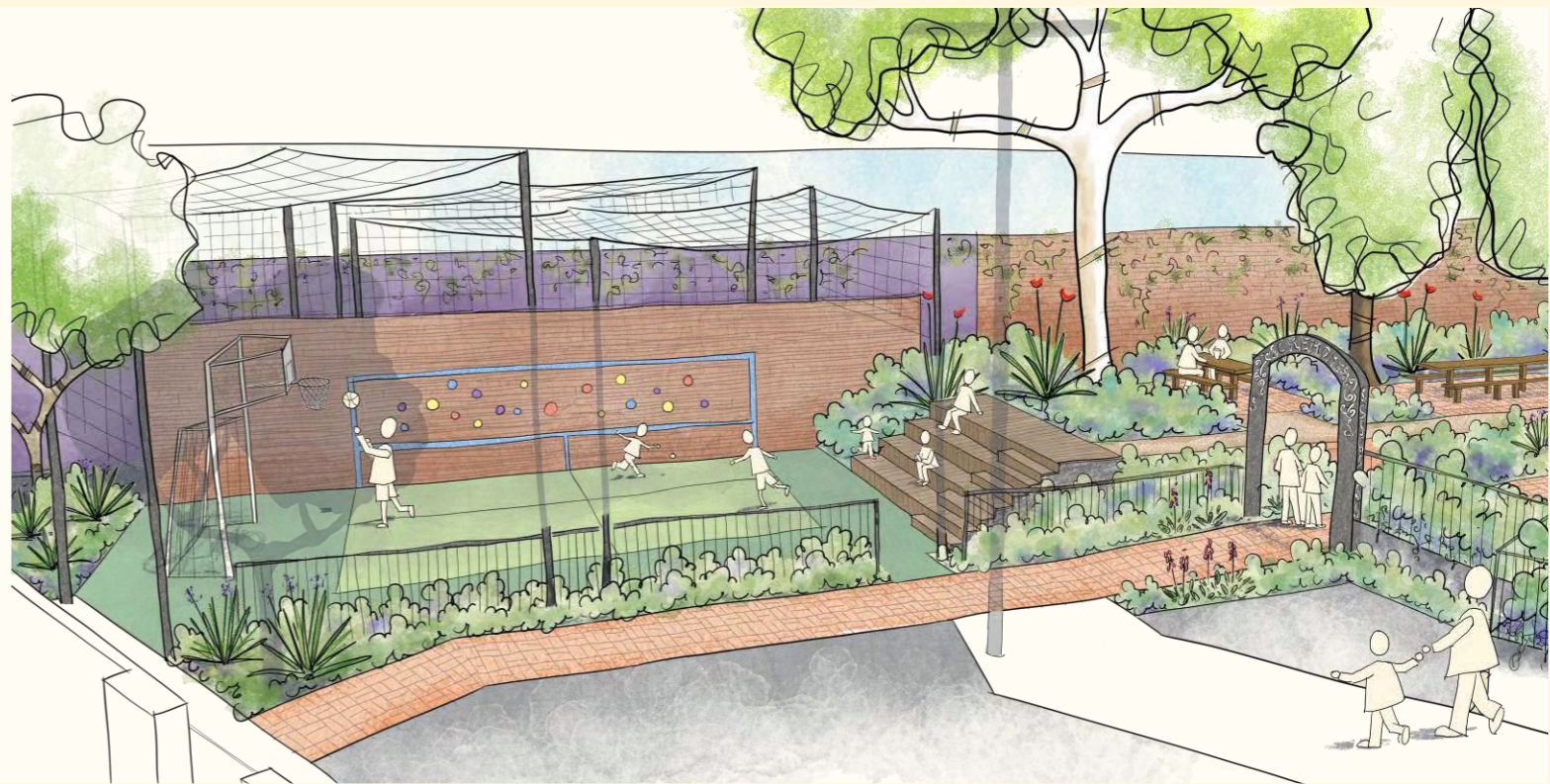


ENTRANCE WALKWAY

# CHARLES EVANS RESERVE: DRAFT LANDSCAPE CONCEPT DESIGN PRECEDENTS: ENTRANCES AND SOUNDWALL



FOUR-SQUARE AND REBOUND WALL



BASKETBALL / SOCCER MULTI-SPORT



BLEACHER SEATS



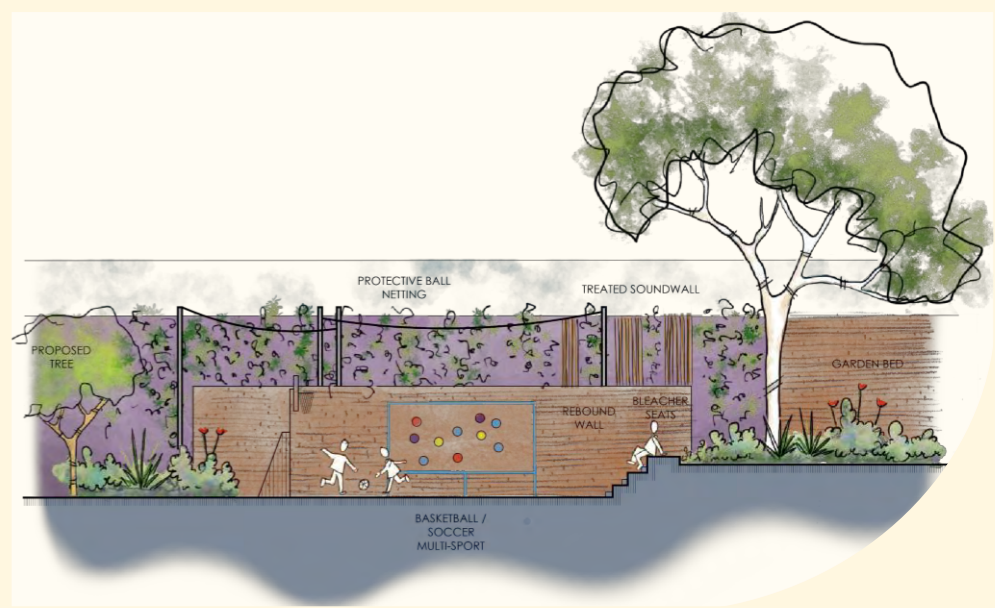
NETTED BASKETBALL

The design concept includes:

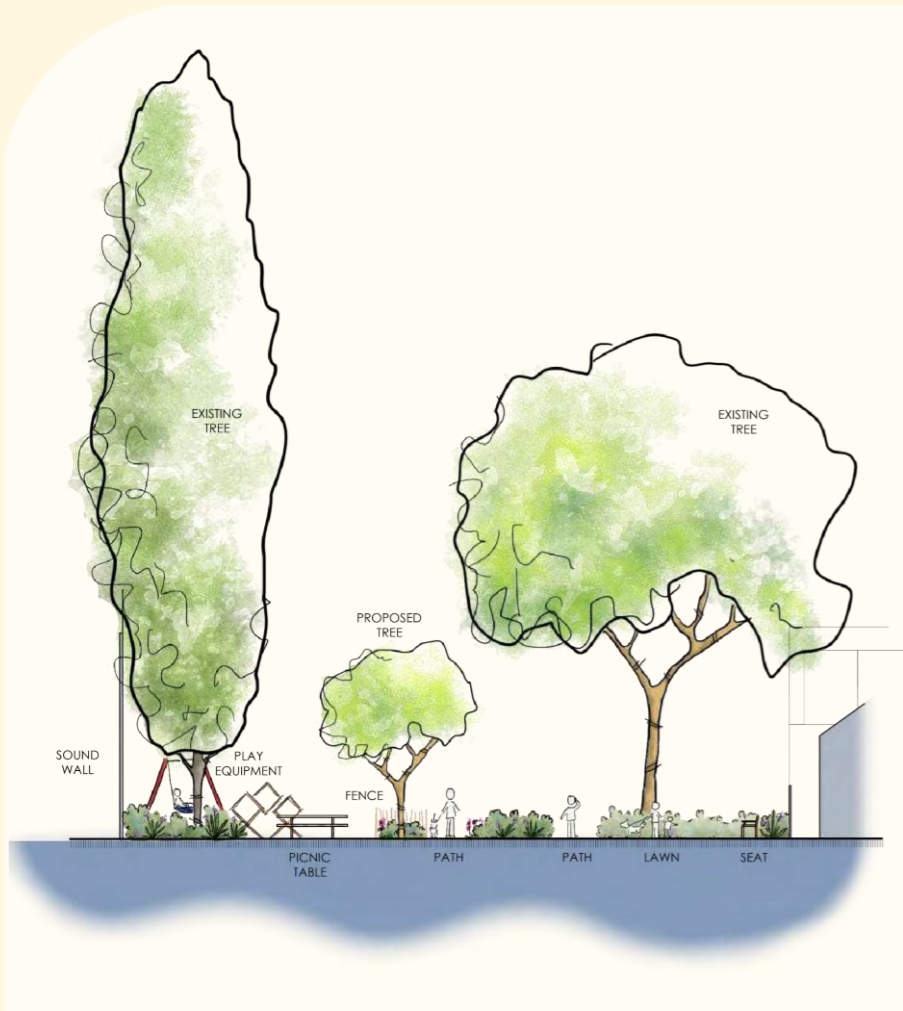
- Basketball and soccer multi-court
- Four-square
- Rebound wall
- Protective ball netting and fence
- Bleacher seats for relaxing
- New planting
- Space for vehicle turning
- Expansion of the reserve by 17%
- Loss of two-timed parking spots and rearrangement of permit parking
- No reduction in permit parking



BLEACHER SEATS



CHARLES EVANS RESERVE: DRAFT LANDSCAPE CONCEPT DESIGN PRECEDENTS: CUBITT STREET EXTENSION



The design concept includes:

- Defined lawn area in sunniest part of the reserve
- New, expanded play space
- Picnic area with BBQ, rubbish bin, drinking fountain and dog drinking bowl
- Fence separating play space from paths and lawn
- Four picnic tables, including one for larger group gatherings
- Six bench seats
- Accessible path access into and through the reserve
- New gardens
- Visually softened sound walls



## CHARLES EVANS RESERVE: DRAFT LANDSCAPE CONCEPT DESIGN PRECEDENTS: MAIN RESERVE