

# Mixed recycling

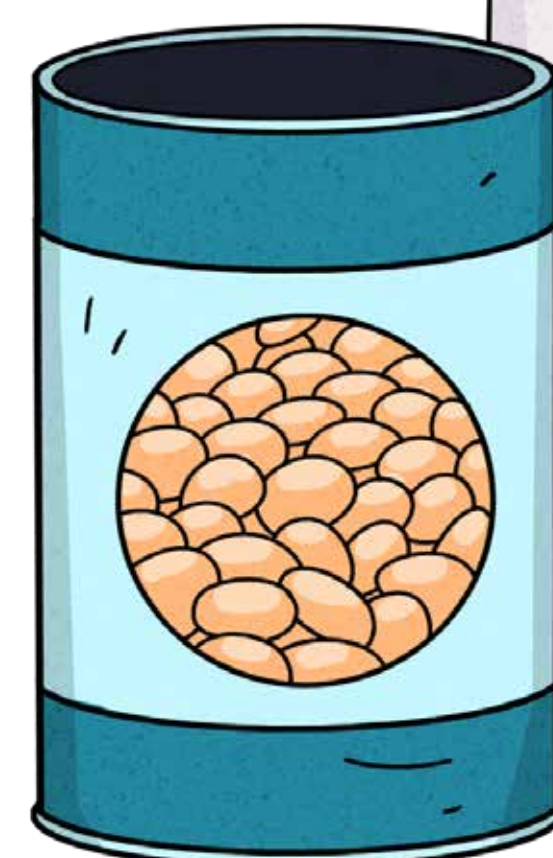
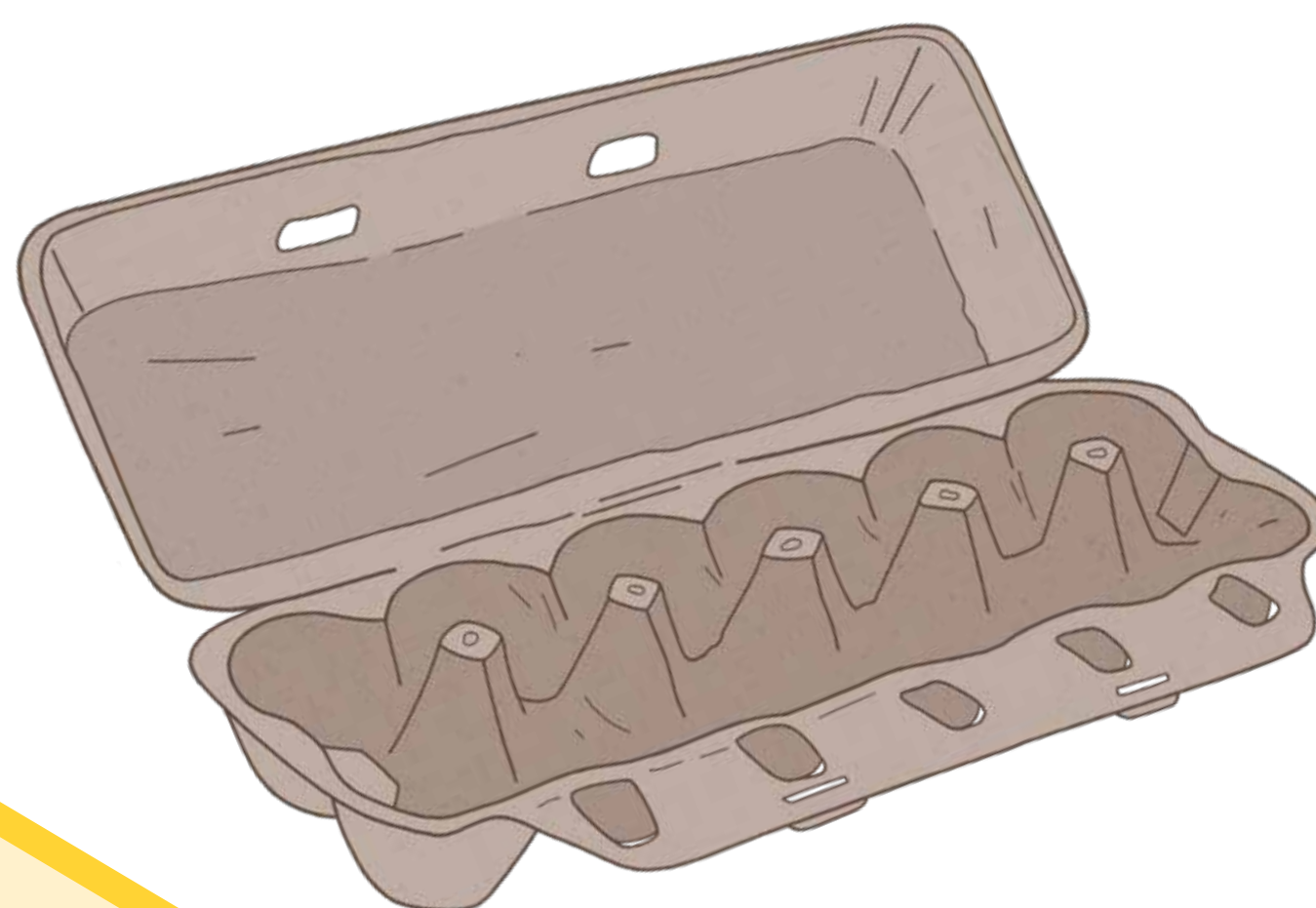
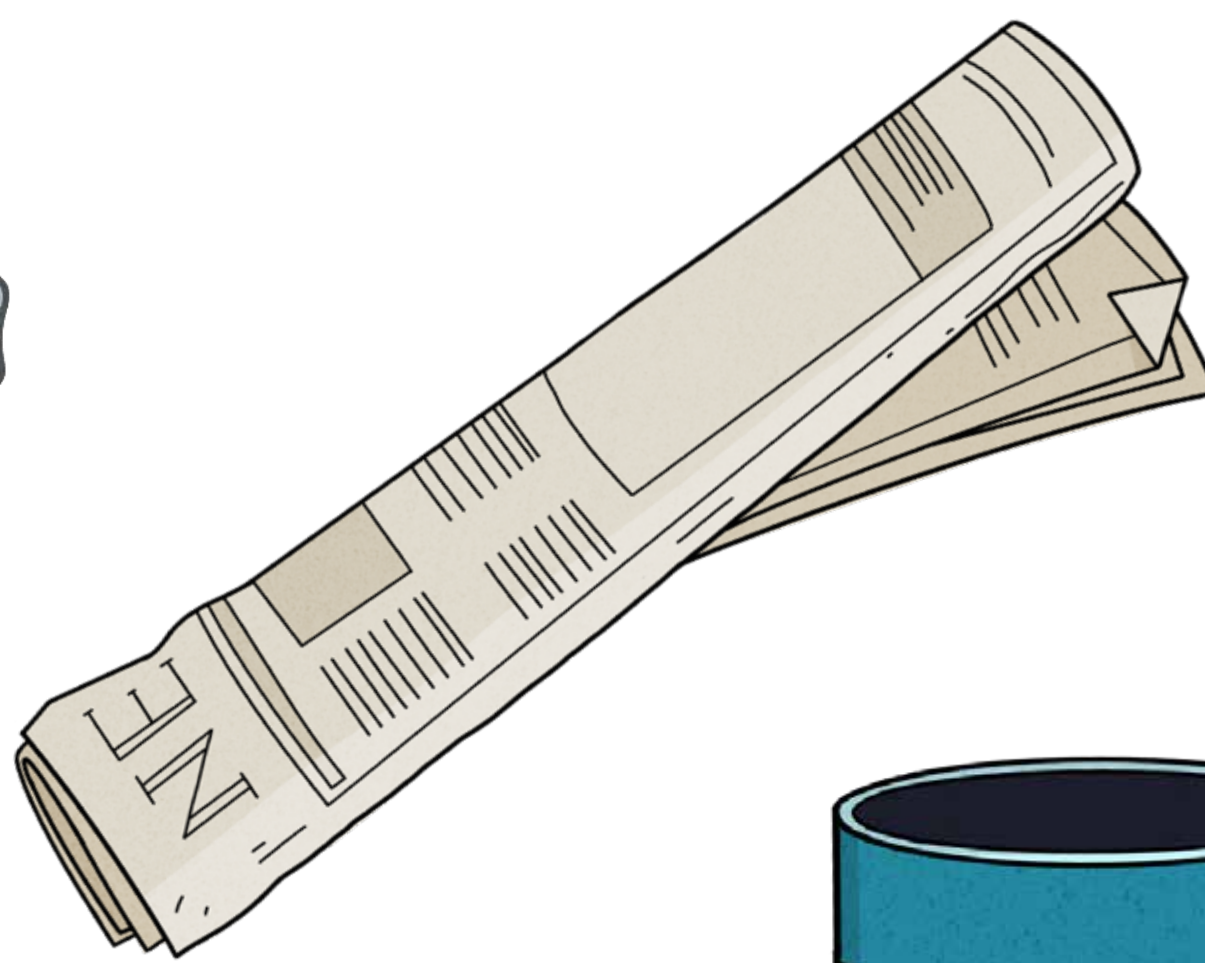
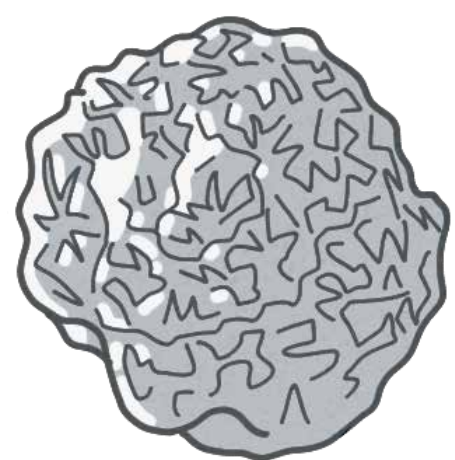
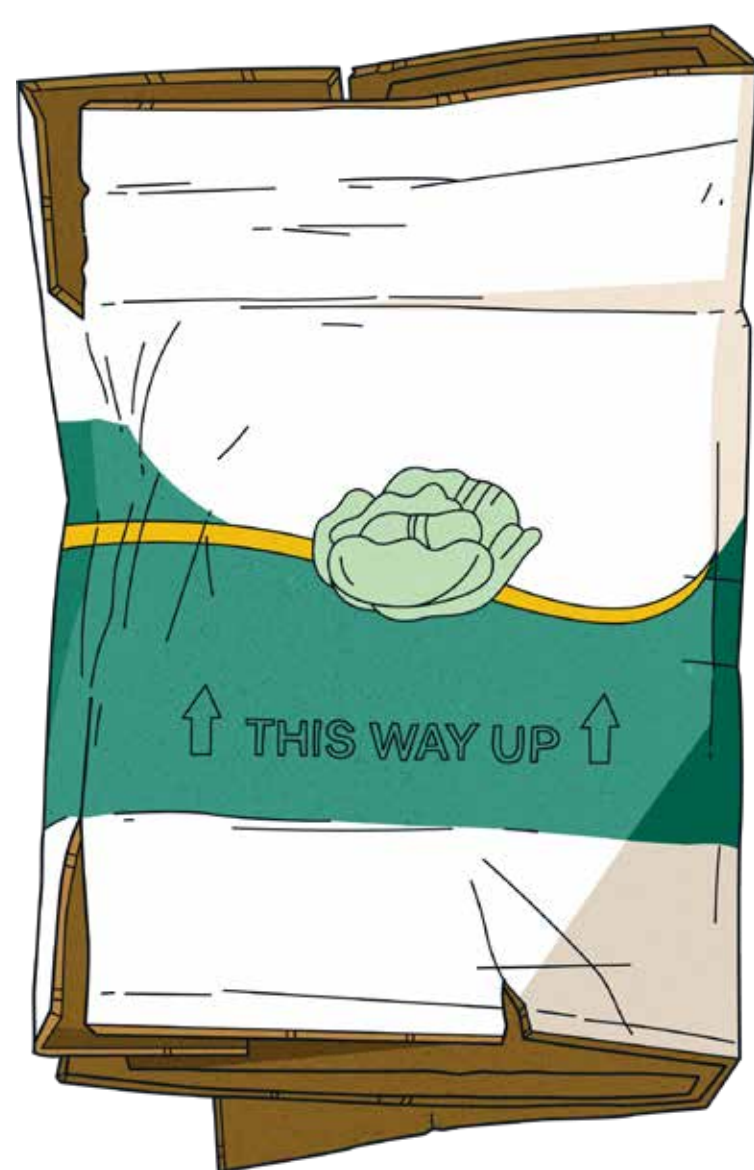
Put your recycling in the bin loose, not in bags.

Flatten boxes to save space.

Glass no longer goes in this bin.

## ✓ Yes

- ✓ Accepted plastic bottles and containers
- ✓ Aluminium and steel tins, cans, foil
- ✓ Cardboard, cereal boxes, egg cartons
- ✓ Paper, newspapers, magazines, paper envelopes
- ✓ Coated or waxed cardboard



## ⊘ No

Plastic bags, other soft plastics, clothing, shoes, textiles, electronic waste and batteries, glass, crockery, polystyrene (styrofoam).