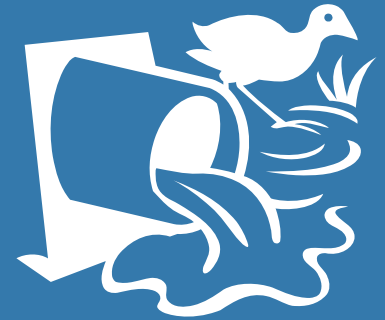


Site Permeability

Building design for a sustainable future



What's included in this fact sheet:

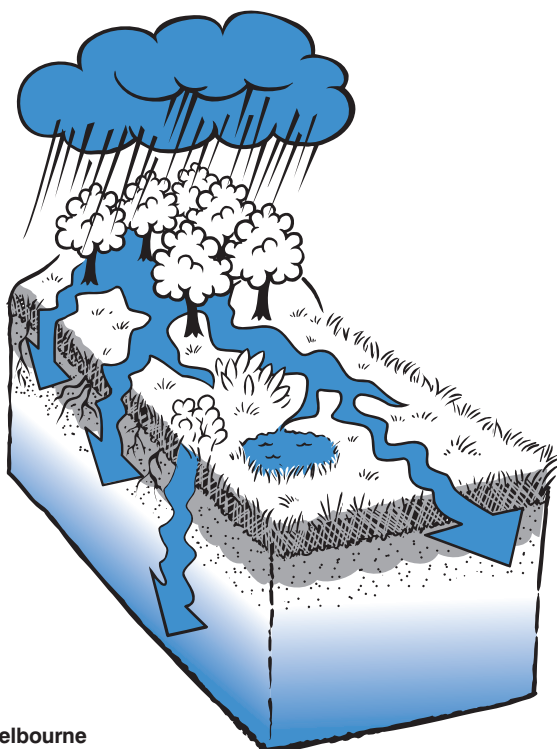
- What is Site Permeability?
- How will consideration of site permeability benefit me?
- How can I increase site permeability?
- Permeable paving
- Design Considerations
- Where can I find out more?
- Mandatory Requirements
- Council's Design Advice

This fact sheet examines the increasing densities in our urban environments which have led to a dramatic reduction in permeable surfaces, through the construction of impervious roads, buildings and car parks. Council encourages you to consider permeable design solutions in your building project to help prevent stormwater run-off, which in turn has capacity implications for drainage infrastructure and can degrade the water quality of Melbourne's rivers, creeks and ultimately Port Phillip Bay.

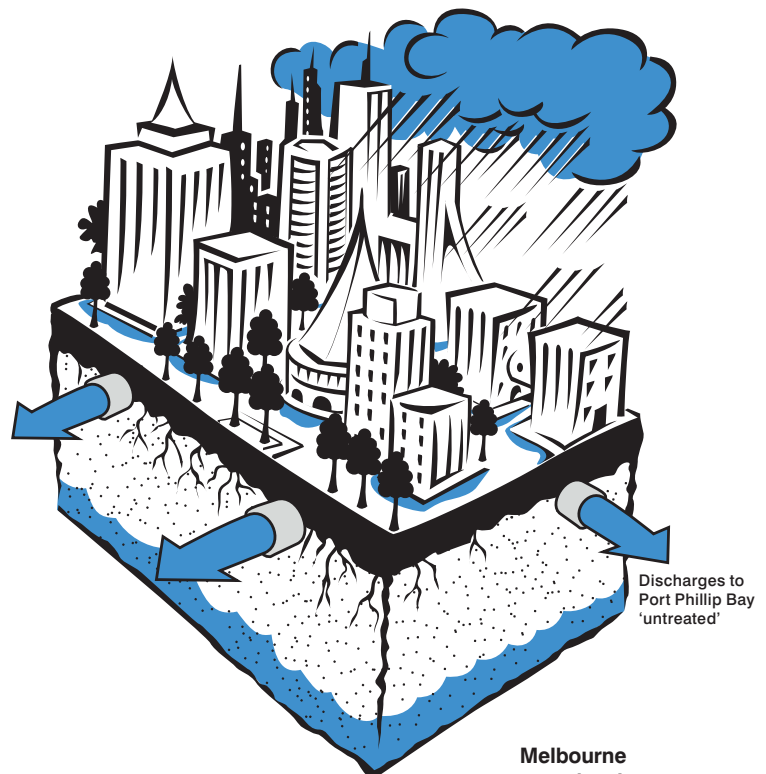
What is Site Permeability?

Permeable sites minimise stormwater run-off by permitting rain water to be absorbed into the soil. A lack of permeability increases flooding in urban areas during storm events affecting not only infrastructure, but our homes

as well. Many simple measures can be taken to counter-act this, and good building design should always consider ways in which site permeability can be enhanced or maintained.



Melbourne
pre development



Melbourne
post development

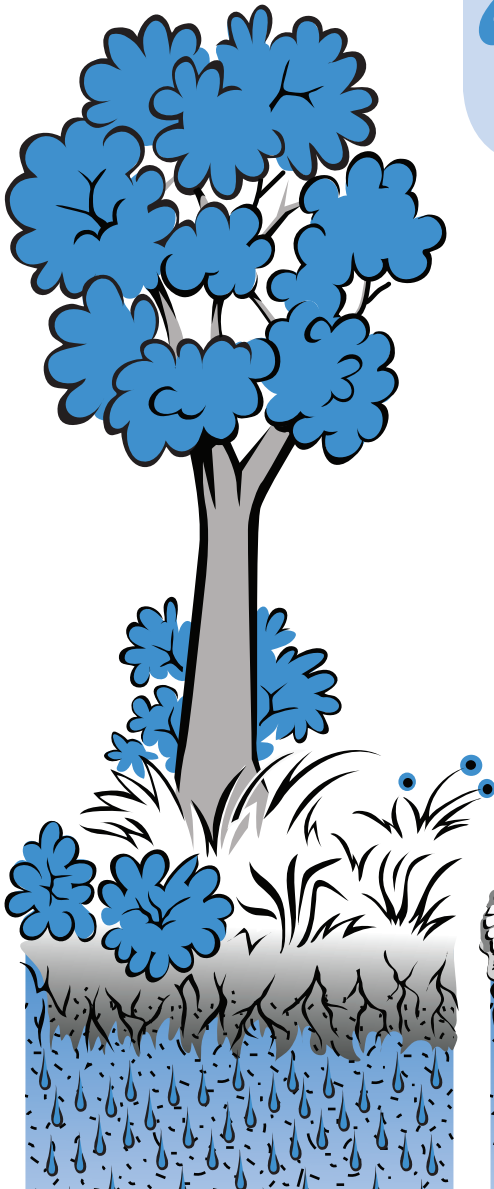


How will site permeability benefit me?

Providing a contribution to your overall Water Sensitive Urban Design (WSUD) aims, enhancing or maintaining permeability on site can also:

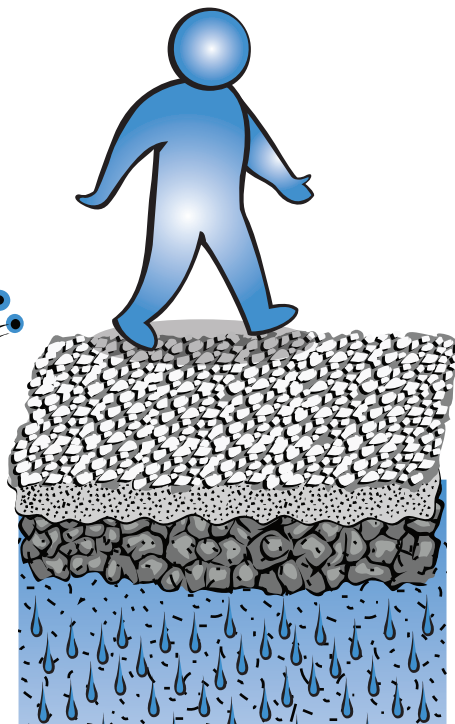
- Reduce the volume of stormwater runoff which can cause localised flooding. Localised flooding can damage homes and property and greatly increase insurance premiums in certain areas
- Reduce pollution of waterways and habitats
- Reduce the need for expensive upgrades to local stormwater infrastructure
- Increase infiltration to sub-soil and allow groundwater recharge. This will not only help maintain groundwater supplies, but also aid local site ecology by ensuring sufficient water reaches tree root zones
- Reduce downstream flooding and stream-bank erosion

“Through the design process we realised how easy it was to improve our site’s permeability with readily available cost effective measures.”



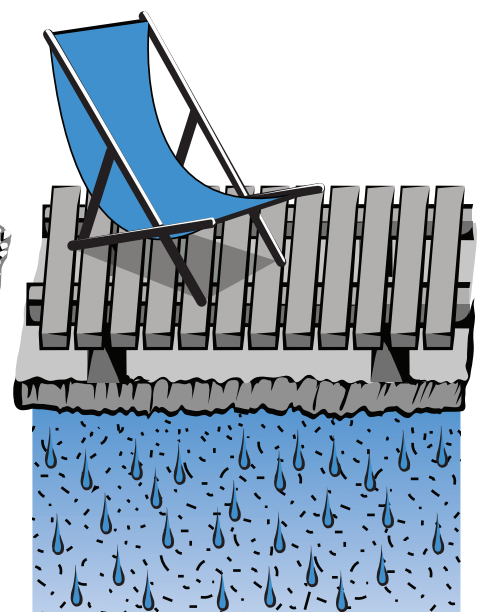
1. Garden Bed

Natural ground



2. Gravel

Permeable sub-base layer or membrane



3. Decking

Unmade ground below, or with permeable treatment.

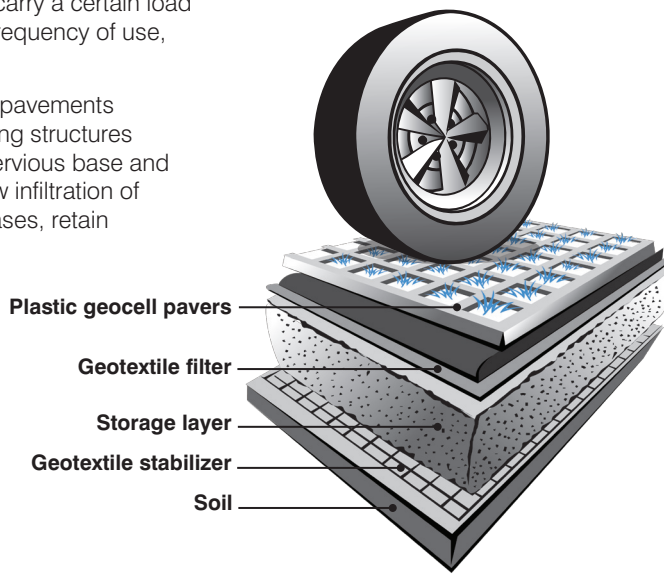


How to increase site permeability?

Permeable paving

Whilst most increases in site permeability can be achieved without specialist treatment, in some situations measures such as porous/permeable paving may be required. For example, where paving is required to carry a certain load capacity with a high frequency of use, such as a car park.

Porous or permeable pavements supporting load bearing structures are comprised of a pervious base and sub-base. These allow infiltration of water, and in some cases, retain polluting particles.

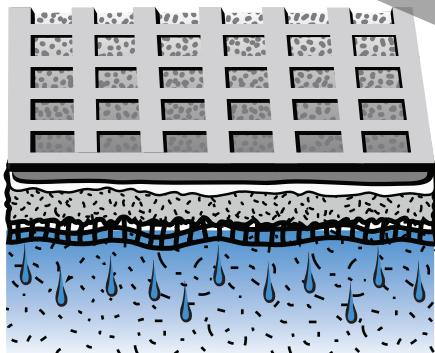
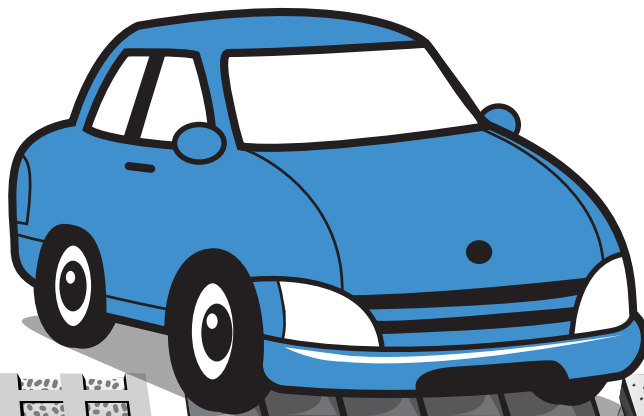


Design Considerations

Whilst use of permeable paving can have many beneficial outcomes, not all sites are suitable for its installation. In addition, lack of maintenance can lead to clogging which in turn reduces infiltration levels. Therefore, to ensure effectiveness of permeable paving, the following site conditions must be considered:

- What is the primary design purpose? Flood mitigation, water quality improvement, water conservation
- Depth to groundwater table
- Soil type
- Soil depth
- Type of traffic (weight and volume)
- Slope
- Design life
- Maintenance and clogging
- Local regulations
- Adjacent infrastructure

It is advisable to seek specialist advice when selecting and installing permeable paving to ensure efficacy. Contact your local council for further guidance



4. Permeable paving

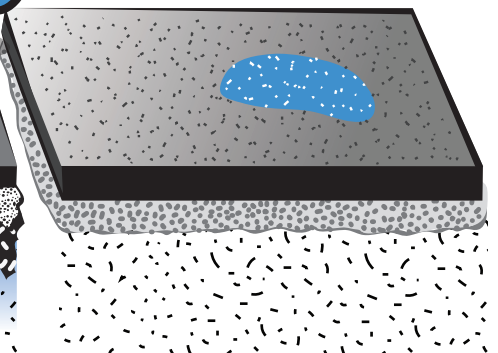
Typically used where pavement is required to have a load bearing capacity such as:

- Car parks
- Driveways
- Streets with low traffic volumes
- Public squares



5. Concrete or brick pavers

Spacing to allow drainage. If not possible, slope paving to drain to garden beds, swales etc.



6. Non-porous concrete, tarmac etc.

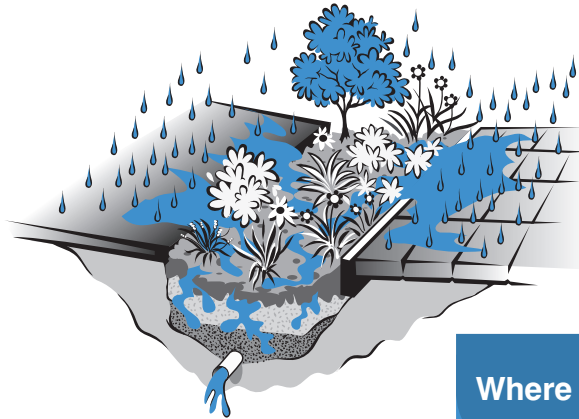
Where porous/permeable paving cannot be applied, slope hardstand drainage towards swales and grassed buffer zones to reduce stormwater run-off.



Further design options

Garden Beds and Swales

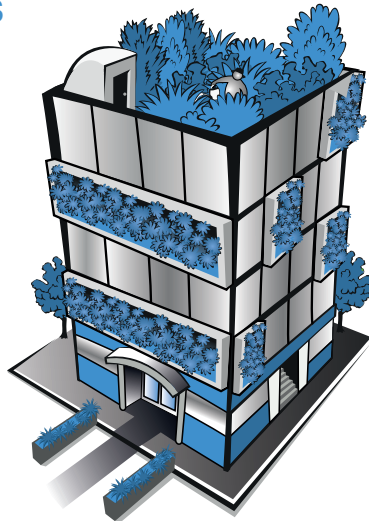
To improve permeability of semi and non porous surfaces consider sloping small area surfaces to a garden bed. For larger sites such as car parks, an engineered swale with a drainage component can be utilised to reduce and treat discharge to the stormwater system.



Alternative design options

In situations where it is not possible to improve your site's ground level permeability, there are other options available to reduce stormwater quality and flow. This may include inner urban sites which have been built on boundary to boundary.

Such measures may include raingardens, rainwater tanks, green walls and roofs. The latter may provide additional benefits such as open space amenity to building occupants, an increased ecological contribution, increased insulation and reduction in urban heat island effect.



Where can I find out more?

Resources and Tools:

Water Sensitive Urban Design:

www.melbournewater.com.au

Sustainable Gardening in the City of Melbourne guide:

City of Melbourne

www.melbourne.vic.gov.au

Sustainable Landscaping and a list of water saver garden centres:

Department of Sustainability and Environment

www.ourwater.vic.gov.au

Stormwater Management Education Programmes:

Clearwater

www.clearwater.asn.au

Maintaining Water Sensitive Urban Design Elements:

Environmental Protection Authority

www.epa.vic.gov.au

Permeable Paving Design tools:

LockPave and PermPave software

www.cmaa.com.au

Selection of WSUD materials:

Ecospecifier

www.ecospecifier.org

Green Roofs and Walls Design Guide:

www.growinggreenguide.org

Other Fact Sheets in this series are also available to provide guidance on the 10 Key Sustainable Building Categories. For further information on site permeability, consider the Fact Sheets entitled:

- Stormwater Management
- Green Roofs, Walls and Facades

Mandatory Requirements and Council's Design Advice

Mandatory requirements

Council WSUD Policies, Site permeability requirements in local planning schemes. Confirm these requirements before lodging your planning application.

Council's Design Advice

Landscape design that maintains or enhances infiltration of stormwater on site. Show on planning application drawings:

- Percentage site permeability
- Location of garden beds/lawns
- Type of paving and hardstand areas

- Location and extent of paving/hardstand areas
- Cross-sections for stormwater treatment type. E.g. permeable paving, raingardens etc.
- Slope/direction of run-off from hardstand areas to garden beds, swales or buffers

Information in reports – SDA/SMP:

- Type of paving proposed
- Suitability for site conditions
- Indicative maintenance regime

For information in your language, please call 9280 1940 and quote the **REF** number below. | 欲知粵語版本的資訊，請致電9280 1932並報上下列**REF**號碼。| Για πληροφορίες στα Ελληνικά, παρακαλούμε καλέστε το 9280 1934 και αναφέρετε τον αριθμό **REF** παρακάτω. | Per informazioni in italiano siete pregati di chiamare il numero 9280 1931 e di citare il numero di riferimento (**REF** number) sottoindicato. | 欲知普通话版本的信息，请致电9280 1937并报上下列**REF**号码。| Para información en castellano llame al 9280 1935 y cite el número de **REF**. De más adelante. | Để biết thông tin bằng tiếng Việt, xin hãy gọi số 9280 1939 và nói số **REF** dưới đây. | للمعلومات باللغة العربية، يرجى الإتصال هاتفيا بالرقم 9280 1930 والإشارة الى رقم المرجع **REF** المذكور أدناه. **REF 16015**

COPYRIGHT © 2015 Cities of Maribyrnong, Melbourne, Port Phillip, Stonnington and Yarra (known as IMAP).
IMAP owns the valuable copyright in the Fact Sheet under the Copyright Act 1968 (Cth). Except for any uses authorised by IMAP, no part of this Fact Sheet may be reproduced, used or distributed by whatever means without the express permission first obtained from IMAP.

DISCLAIMER: This Fact Sheet has been created for general information purposes only. While the Fact Sheet has been created with all due care, no warranty is given as to its suitability for any particular purpose and users should obtain their own advice relevant to their situation and specific needs. IMAP or any party authorised by IMAP to reproduce the Fact Sheet is not responsible for the accuracy, currency or reliability of the Fact Sheet and accepts no liability for any damage, losses whether direct or indirect, claims or expenses howsoever arising from any party who may rely on its contents.