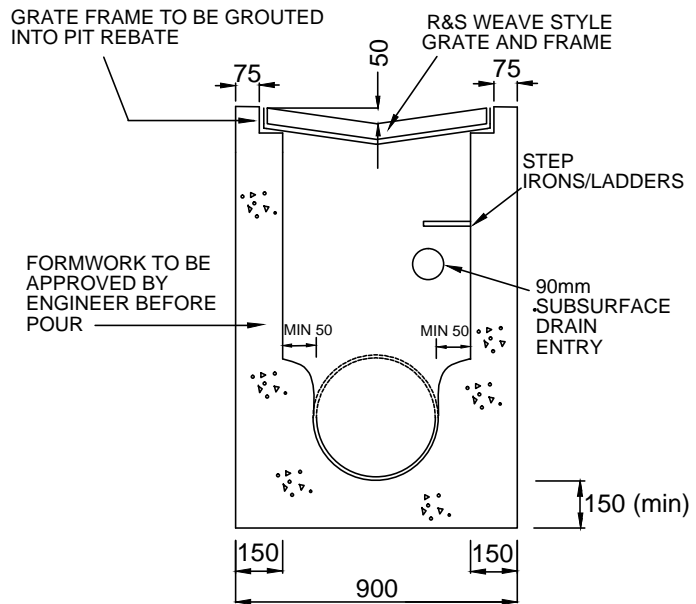
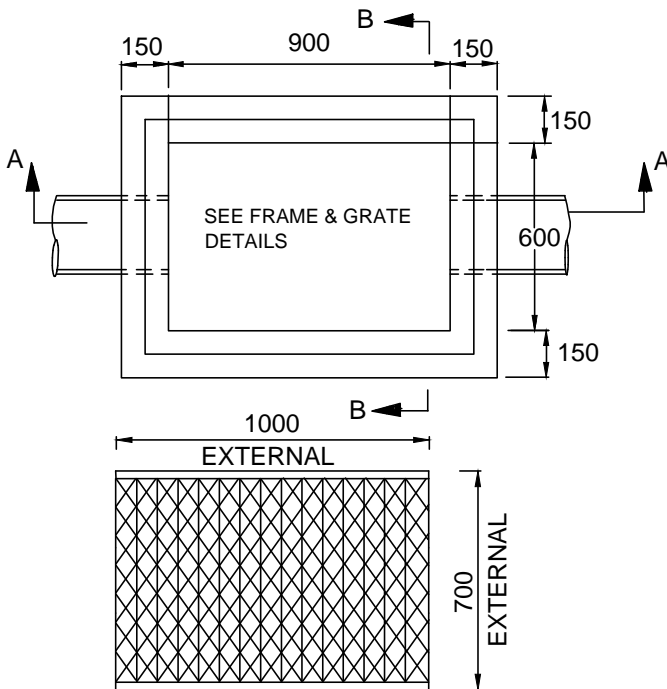


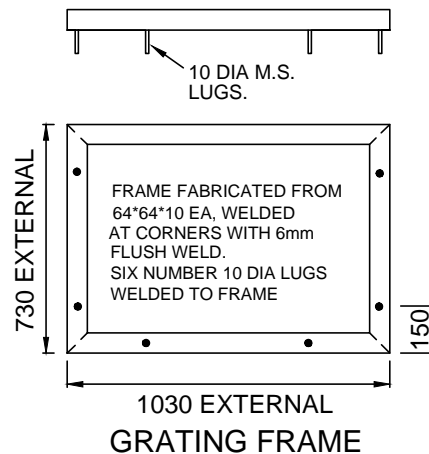
SECTION A-A



SECTION B-B



WEAVE STYLE GRATE



GRATING FRAME

**CLASS "D" LOAD RATING GRATE**

**MATERIAL**

- \* Straight bars 50\*12 bars Qty 17
- \* Weave bars 40\*10 bars Qty 16
- \* End bars 50\*25 bars Qty 2

**GENERAL NOTES**

1. ALL CONCRETE SHALL BE F'c 25MPa AT 28 DAYS.
2. PITS DEEPER THAN 750mm SHALL BE FITTED WITH GALVANISED STEP IRONS (@ 300mm C.T.S) REFER TO DRAWING YSD212 FOR DETAILS.
3. THE FLOOR OF THE PIT SHALL BE FORMED UP TO AT LEAST THE OVERT OF PIPE.
4. CONCRETE TO BE VIBRATED IN PITS TO ENGINEER'S SATISFACTION.
5. CONCRETE TO BE POURED INTO PITS DIRECTLY OUT OF SUPPLY VEHICLES.
6. BEDDING MATERIAL SHALL BE 100mm COMPACTED THICKNESS OF CLASS 2 C.R.
7. F72 REINFORCEMENT IN WALLS OVER 2m DEEP.
8. ALL LINTELS TO BE CHARCOAL COLOUR.
9. ALL PIT SURROUNDS TO BE CHARCOAL COLOUR.

**Yarra Standard: YSD210**  
**Drawing Title:**

"V" SHAPED GRATE FOR PITS IN OPEN INVERTS

Scale at A4 N.T.S

REV	DATE	DRAWN BY
A	30/04/12	DKC
B	26/10/17	HL

